

Cipla

gRevlimid settlement: The unaccounted upside

- US growth visibility improves:** Cipla settles patent litigation with Celgene (Bristol Myers Squibb) in the US for gRevlimid (~USD7.6bn). As per the settlement terms, Cipla is licensed to sell volume-limited quantity after Mar 2022 and without volume-restriction after Jan 31, 2026 subject to product approval from the US FDA. While the details pertaining to launch date and market share are not disclosed, the opportunity can add an NPV of Rs40/share to our target price in a base case scenario (assuming 5-10% market share, 30-50% price erosion between FY23-26). We increase our target price to Rs940 to factor gRevlimid launch in FY23 and maintain our BUY rating. Key catalysts are ramp-up in Albuterol, progress on IV Tramadol, limited competition launches in the US.
- Competitive landscape is crowded, yet remains lucrative:** Natco, Alvogen, Dr. Reddy's have settled for a volume-limited launch until Jan 31, 2026. However, Natco's terms appear favorable compared to others with launch starting from Mar 2022 (first to market) and volumes increasing every year upto Mar 2025 but capped at one-third volume share in the final year. Alvogen will enter after Mar 2022 and their volumes can increase each period to no more than a single-digit percentage in the final year. While Dr. Reddy's and Cipla will enter after Mar-2022, they have not disclosed volume-limited license date and percentages. Other known filers are Aurobindo, Sun, Hetero, Apotex, ANDA Inc, Cadila, Mylan, Lupin. So far, only Alvogen has received tentative approval.
- Bull-Bear spread of Rs26-Rs71:** Our base case scenario assumes 30-50% price erosion and 5-10% market share between FY23-26 which results in an NPV of Rs40/share for Cipla. Our bear case scenario assumes higher competition, higher price erosion and lower market share resulting in an NPV of Rs26/share and bull case scenario assumes three player market with lower price erosion and higher market share resulting in an NPV of Rs71/share. We note the possibility of more players settling with Celgene could limit upside. Assuming a 5 player market, we factor 30-50% erosion between FY23-26 for Dr. Reddy's and Cipla. We value Reddy's gRevlimid opportunity at Rs384/sh.
- Valuation and risks:** We maintain BUY rating and increase our TP to Rs940/sh based on 23x Sep 22 EPS, Rs29/sh for gAdvair and Rs40/sh for gRevlimid. We believe Cipla is in sweet spot with key businesses witnessing strong growth momentum. While Covid sales could normalise in India, recovery in ex-Covid prescription business, structural savings in costs and ramp up in gAlbuterol share in the US is likely to drive an earnings growth of ~28% CAGR over FY20-23e. Key risks: lower-than-expected growth in India, slower ramp-up in Albuterol, delay in resolution of Goa warning letter, higher price erosion in the US.

Financial Summary

YE Mar (Rs mn)	FY18	FY19	FY20	FY21E	FY22E	FY23E
Net Sales	1,52,200	1,63,624	1,71,320	1,94,799	2,18,031	2,38,097
EBITDA	28,271	30,973	32,060	44,216	47,676	53,905
EBITDA Margins	18.6%	18.9%	18.7%	22.7%	21.9%	22.6%
APAT	15,489	14,924	14,995	24,831	28,175	33,080
Adj. EPS (Rs)	19.2	18.5	18.6	30.8	34.9	41.0
P/E (x)	39.3	40.8	40.6	24.5	21.6	18.4
RoCE (%)	8.9	8.3	8.6	12.9	13.3	14.0

Source: Company, HSIE Research

BUY

CMP(as on 11 Dec 2020)	Rs 756
Target Price	Rs 940
NIFTY	13,514

KEY CHANGES	OLD	NEW
Rating	BUY	BUY
Price Target	Rs 900	Rs 940
EPS %	FY21E	FY22E
	+0%	+0%

KEY STOCK DATA

Bloomberg code	CIPLA IN
No. of Shares (mn)	806
MCap (Rs bn) / (\$ mn)	610/8,276
6m avg traded value (Rs mn)	6,112
52 Week high / low	Rs 829/354

STOCK PERFORMANCE (%)

	3M	6M	12M
Absolute (%)	4.1	19.0	68.4
Relative (%)	(14.5)	(18.4)	54.4

SHAREHOLDING PATTERN (%)

	Sep-20	Jun-20
Promoters	36.65	36.65
FIs & Local MFs	21.01	22.33
FPIs	20.02	18.61
Public & Others	22.32	22.41
Pledged Shares	0.00	0.00

Source : BSE

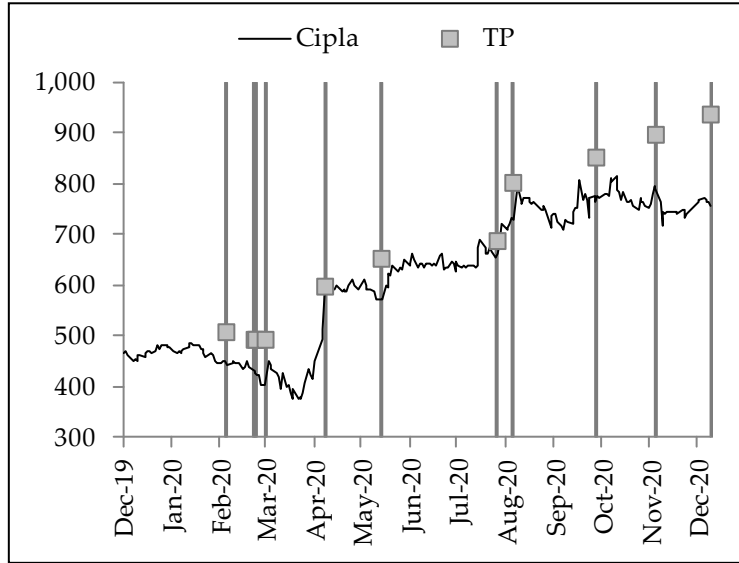
Bansi Desai, CFA

bansi.desai@hdfcsec.com
+91-22-6171-7341

Karan Vora

karan.vora@hdfcsec.com
+91-22-6171-7359

RECOMMENDATION HISTORY



Date	CMP	Reco	Target
6-Feb-20	448	BUY	510
24-Feb-20	436	BUY	495
26-Feb-20	426	BUY	495
2-Mar-20	402	BUY	495
9-Apr-20	580	BUY	600
16-May-20	570	BUY	655
28-Jul-20	663	BUY	690
10-Aug-20	729	BUY	805
28-Jul-20	663	BUY	690
29-Sep-20	773	BUY	855
7-Nov-20	790	BUY	900
14-Dec-20	756	BUY	940

From 2nd March 2020, we have moved to new rating system

Rating Criteria

BUY: >+15% return potential

ADD: +5% to +15% return potential

REDUCE: -10% to +5% return potential

SELL: > 10% Downside return potential

Disclosure:

We, **Bansi Desai, CFA** and **Karan Vora, CA**, authors and the names subscribed to this report, hereby certify that all of the views expressed in this research report accurately reflect our views about the subject issuer(s) or securities. HSL has no material adverse disciplinary history as on the date of publication of this report. We also certify that no part of our compensation was, is, or will be directly or indirectly related to the specific recommendation(s) or view(s) in this report.

Research Analyst or his/her relative or HDFC Securities Ltd. **does not have** any financial interest in the subject company. Also Research Analyst or his relative or HDFC Securities Ltd. or its Associate may have beneficial ownership of 1% or more in the subject company at the end of the month immediately preceding the date of publication of the Research Report. Further Research Analyst or his relative or HDFC Securities Ltd. or its associate **does not have** any material conflict of interest.

Any holding in stock –No

HDFC Securities Limited (HSL) is a SEBI Registered Research Analyst having registration no. INH000002475.

Disclaimer:

This report has been prepared by HDFC Securities Ltd and is solely for information of the recipient only. The report must not be used as a singular basis of any investment decision. The views herein are of a general nature and do not consider the risk appetite or the particular circumstances of an individual investor; readers are requested to take professional advice before investing. Nothing in this document should be construed as investment advice. Each recipient of this document should make such investigations as they deem necessary to arrive at an independent evaluation of an investment in securities of the companies referred to in this document (including merits and risks) and should consult their own advisors to determine merits and risks of such investment. The information and opinions contained herein have been compiled or arrived at, based upon information obtained in good faith from sources believed to be reliable. Such information has not been independently verified and no guaranty, representation of warranty, express or implied, is made as to its accuracy, completeness or correctness. All such information and opinions are subject to change without notice. Descriptions of any company or companies or their securities mentioned herein are not intended to be complete. HSL is not obliged to update this report for such changes. HSL has the right to make changes and modifications at any time.

This report is not directed to, or intended for display, downloading, printing, reproducing or for distribution to or use by, any person or entity who is a citizen or resident or located in any locality, state, country or other jurisdiction where such distribution, publication, reproduction, availability or use would be contrary to law or regulation or what would subject HSL or its affiliates to any registration or licensing requirement within such jurisdiction.

If this report is inadvertently sent or has reached any person in such country, especially, United States of America, the same should be ignored and brought to the attention of the sender. This document may not be reproduced, distributed or published in whole or in part, directly or indirectly, for any purposes or in any manner.

Foreign currencies denominated securities, wherever mentioned, are subject to exchange rate fluctuations, which could have an adverse effect on their value or price, or the income derived from them. In addition, investors in securities such as ADRs, the values of which are influenced by foreign currencies effectively assume currency risk. It should not be considered to be taken as an offer to sell or a solicitation to buy any security.

This document is not, and should not, be construed as an offer or solicitation of an offer, to buy or sell any securities or other financial instruments. This report should not be construed as an invitation or solicitation to do business with HSL. HSL may from time to time solicit from, or perform broking, or other services for, any company mentioned in this mail and/or its attachments.

HSL and its affiliated company(ies), their directors and employees may; (a) from time to time, have a long or short position in, and buy or sell the securities of the company(ies) mentioned herein or (b) be engaged in any other transaction involving such securities and earn brokerage or other compensation or act as a market maker in the financial instruments of the company(ies) discussed herein or act as an advisor or lender/borrower to such company(ies) or may have any other potential conflict of interests with respect to any recommendation and other related information and opinions.

HSL, its directors, analysts or employees do not take any responsibility, financial or otherwise, of the losses or the damages sustained due to the investments made or any action taken on basis of this report, including but not restricted to, fluctuation in the prices of shares and bonds, changes in the currency rates, diminution in the NAVs, reduction in the dividend or income, etc.

HSL and other group companies, its directors, associates, employees may have various positions in any of the stocks, securities and financial instruments dealt in the report, or may make sell or purchase or other deals in these securities from time to time or may deal in other securities of the companies / organizations described in this report.

HSL or its associates might have managed or co-managed public offering of securities for the subject company or might have been mandated by the subject company for any other assignment in the past twelve months.

HSL or its associates might have received any compensation from the companies mentioned in the report during the period preceding twelve months from the date of this report for services in respect of managing or co-managing public offerings, corporate finance, investment banking or merchant banking, brokerage services or other advisory service in a merger or specific transaction in the normal course of business.

HSL or its analysts did not receive any compensation or other benefits from the companies mentioned in the report or third party in connection with preparation of the research report. Accordingly, neither HSL nor Research Analysts have any material conflict of interest at the time of publication of this report. Compensation of our Research Analysts is not based on any specific merchant banking, investment banking or brokerage service transactions. HSL may have issued other reports that are inconsistent with and reach different conclusion from the information presented in this report.

Research entity has not been engaged in market making activity for the subject company. Research analyst has not served as an officer, director or employee of the subject company. We have not received any compensation/benefits from the subject company or third party in connection with the Research Report.

HDFC securities Limited, I Think Techno Campus, Building - B, "Alpha", Office Floor 8, Near Kanjurmarg Station, Opp. Crompton Greaves, Kanjurmarg (East), Mumbai 400 042 Phone: (022) 3075 3400 Fax: (022) 2496 5066 Compliance Officer: Binkle R. Oza Email: complianceofficer@hdfcsec.com Phone: (022) 3045 3600

HDFC Securities Limited, SEBI Reg. No.: NSE, BSE, MSEI, MCX: INZ000186937; AMFI Reg. No. ARN: 13549; PFRDA Reg. No. POP: 11092018; IRDA Corporate Agent License No.: CA0062; SEBI Research Analyst Reg. No.: INH000002475; SEBI Investment Adviser Reg. No.: INA000011538; CIN - U67120MH2000PLC152193

HDFC securities**Institutional Equities**

Unit No. 1602, 16th Floor, Tower A, Peninsula Business Park,

Senapati Bapat Marg, Lower Parel, Mumbai - 400 013

Board: +91-22-6171-7330 www.hdfcsec.com